



SMART BIM SOLUTIONS FOR GROWING BUSINESSES!

[WWW.BIMCS.CO/](http://WWW.BIMCS.CO/)

# About Us

We are a dynamic startup based in Colombia, delivering BIM-driven solutions both nationally and internationally. Backed by a skilled team with hands-on experience in construction, planning, and project execution, we help small and mid-sized businesses take their first step into the digital era. Our services include BIM Estimation, BIM Modeling, BIM Management, and Photogrammetry (Skytech)—designed to ease the transition into the information age with confidence and efficiency.

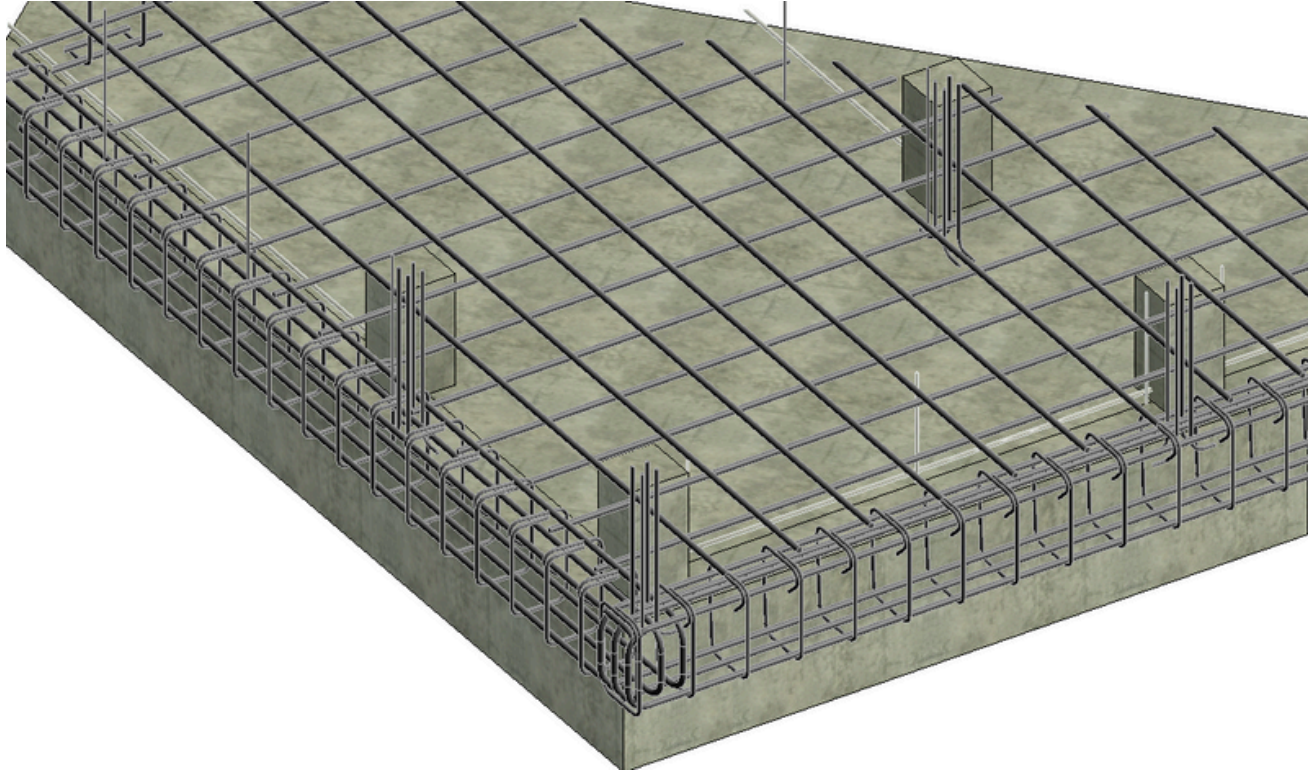


[WWW.BIMCS.CO/](http://WWW.BIMCS.CO/)

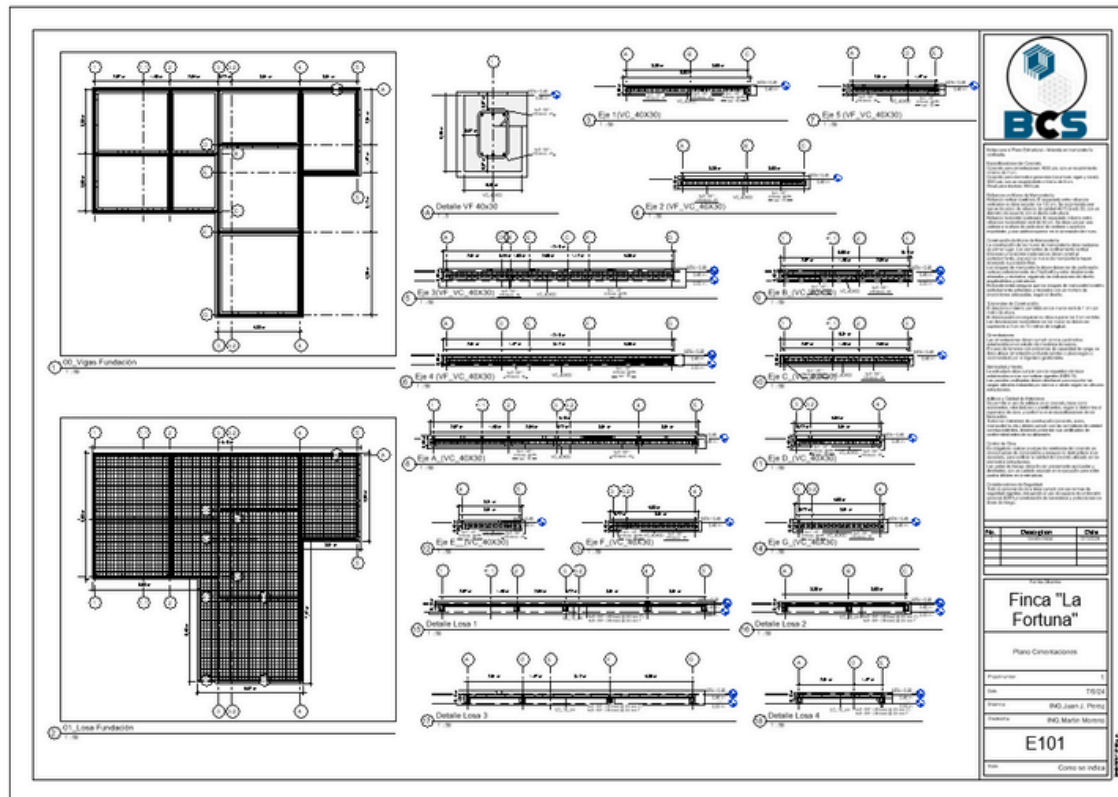
## BIM MODELING SAMPLES



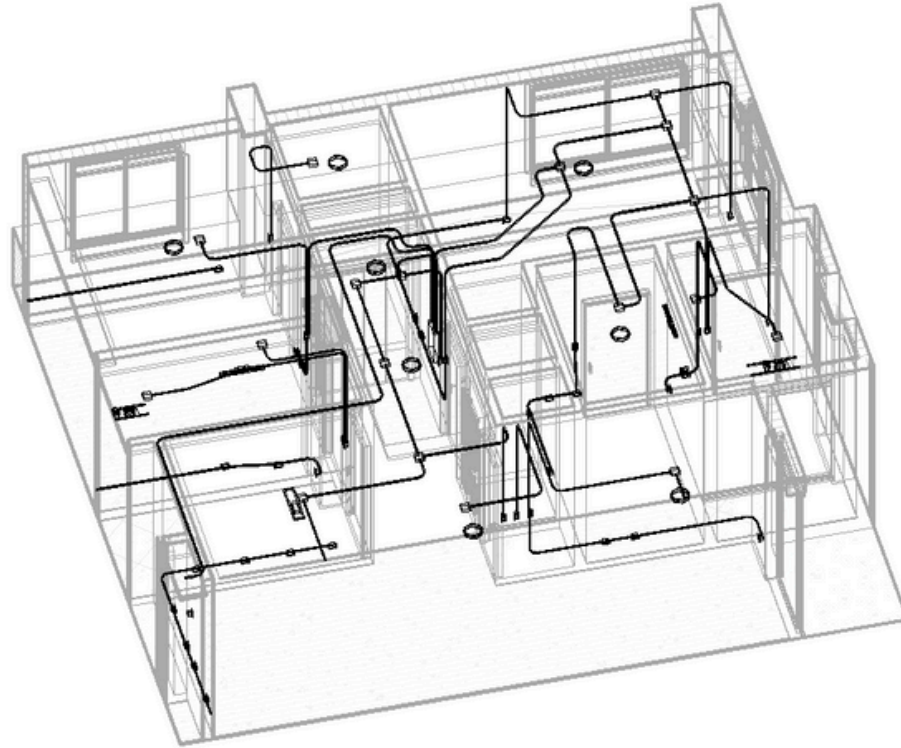
## BIM MODELING SAMPLES - REBAR



## BIM MODELING SAMPLES - STRUCTURAL PLANS

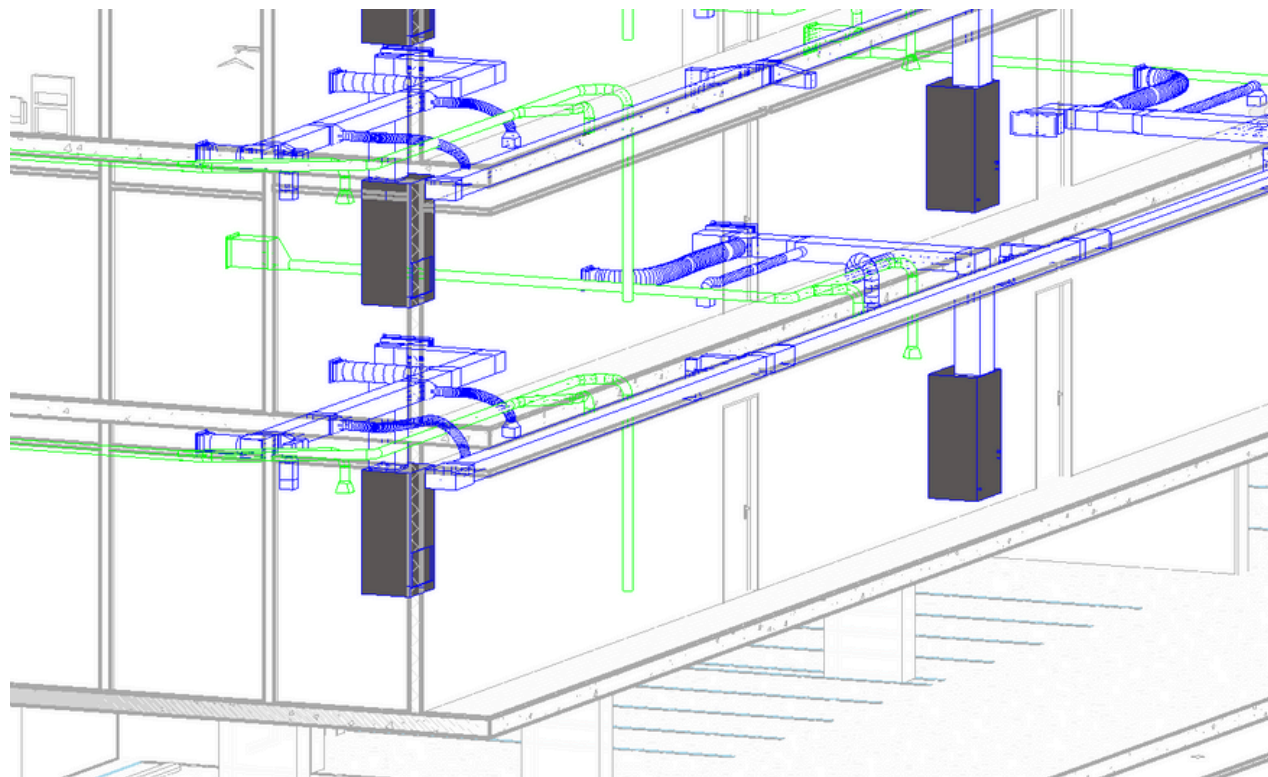


## BIM MODELING SAMPLES - ELECTRICAL

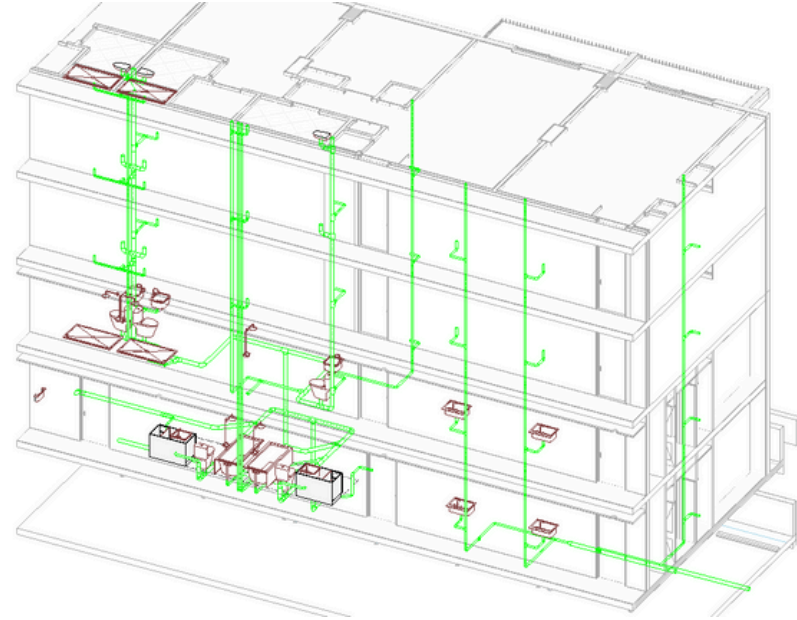
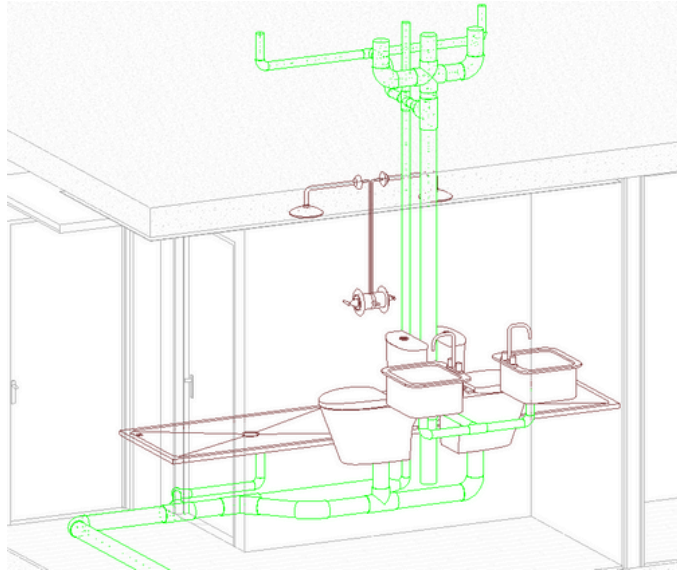




## BIM MODELING SAMPLES - HVAC



## BIM MODELING SAMPLES - PLUMBING





## COORDINATION SAMPLES - CLASH DETECTION

The screenshot displays the Bluebeam software interface with the 'Clash Detective' tool active. The main window shows a 3D model of a building structure with red highlights indicating detected clashes. The 'Clash Detective' panel on the left provides a summary of the results for the 'ST VS ME HG' comparison.

**Clash Detective Summary:**

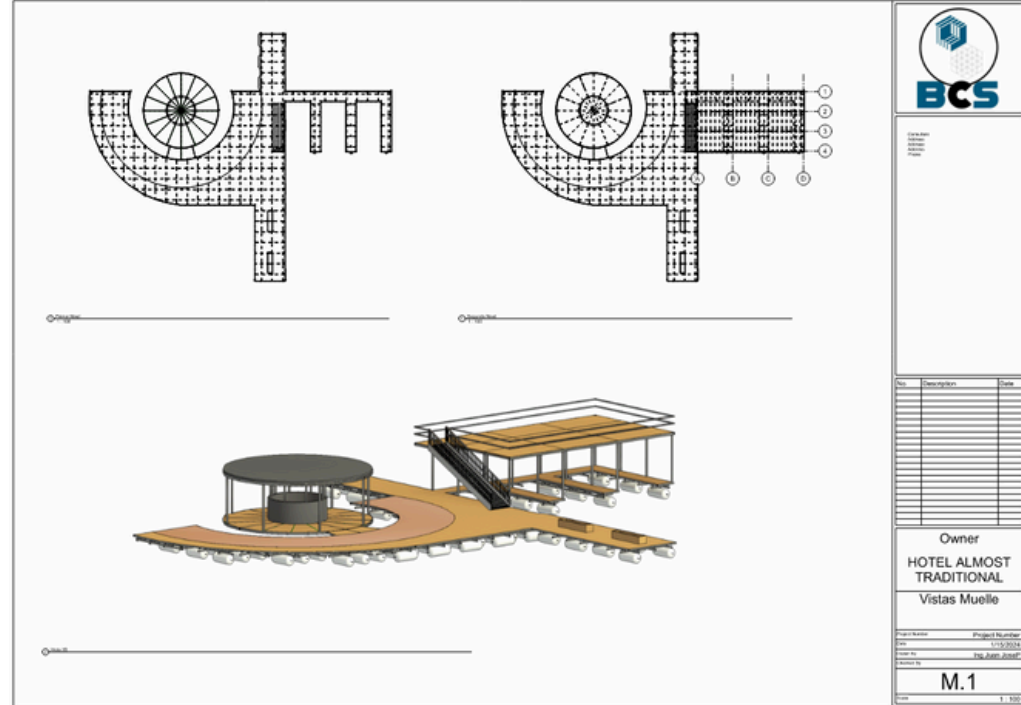
Name	Status	Clashes	New	Active	Reviewed	Approved	Resolved
ST VS AR	Done	10673	0	10673	0	0	0
ST vs ELE HG	Done	648	0	499	0	0	149
ST VS IRR HG	Done	56	0	38	0	0	18
ST VS ME HG	Done	423	0	185	0	0	238
ST VS CIV HG	Done	1	0	1	0	0	0

**Clash Details Table:**

Name	Status	Found	Approved...	Approved	Description	Assigned To	Distance
Conflict2	Active	11/10/56 27-08-2025			Hard		-0.843 m
Conflict3	Active	11/10/56 27-08-2025			Hard		-0.813 m
Conflict1	Active	11/10/56 27-08-2025			Hard		-0.770 m
Conflict5	Active	11/10/56 27-08-2025			Hard		-0.666 m
Conflict6	Active	11/10/56 27-08-2025			Hard		-0.648 m
Conflict7	Active	11/10/56 27-08-2025			Hard		-0.630 m
Conflict8	Active	11/10/56 27-08-2025			Hard		-0.612 m
Conflict9	Active	11/10/56 27-08-2025			Hard		-0.594 m
Conflict10	Active	11/10/56 27-08-2025			Hard		-0.576 m
Conflict11	Active	01/22/05 01-09-2025			Hard		-0.491 m
Conflict4	Active	11/10/56 27-08-2025			Hard		-0.381 m
Conflict13	Active	11/10/56 27-08-2025			Hard		-0.285 m
Conflict24	Active	11/10/56 27-08-2025			Hard		-0.279 m
Conflict25	Active	11/10/56 27-08-2025			Hard		-0.279 m
Conflict26	Active	11/10/56 27-08-2025			Hard		-0.279 m
Conflict27	Active	11/10/56 27-08-2025			Hard		-0.279 m
Conflict139	Active	11/10/56 27-08-2025			Hard		-0.277 m
Conflict15	Active	11/10/56 27-08-2025			Hard		-0.275 m
Conflict18	Active	11/10/56 27-08-2025			Hard		-0.267 m
Conflict14	Active	11/10/56 27-08-2025			Hard		-0.261 m

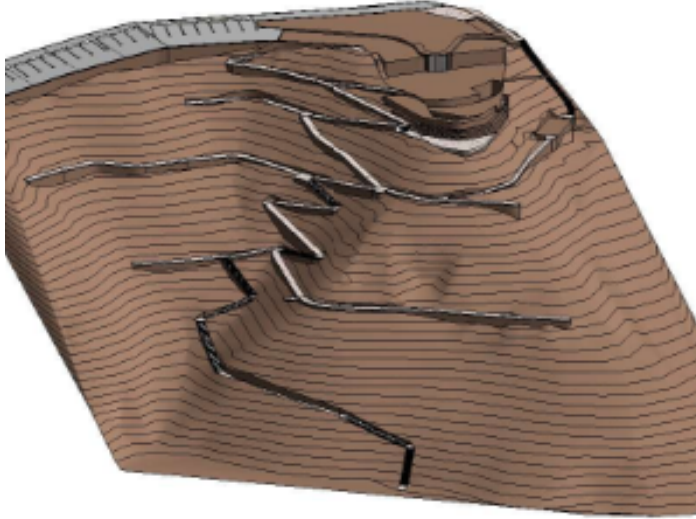
## BIM ESTIMATING SAMPLES - STEEL STRUCTURE

Cantidades Vigas Estructurales			
Family and Type	Comments	Count	Length
RHS-Sección hueca rectangular: 80x40RHS	Estructura de Flotacion Primer Nivel	1	5.07 m
RHS-Sección hueca rectangular: 80x40RHS	Estructura de Flotacion Primer Nivel	1	3.87 m
RHS-Sección hueca rectangular: 80x40RHS	Estructura de Flotacion Primer Nivel	1	3.98 m
RHS-Sección hueca rectangular: 80x40RHS	Estructura de Flotacion Primer Nivel	1	4.24 m
RHS-Sección hueca rectangular: 80x40RHS	Estructura de Flotacion Primer Nivel	1	4.75 m
RHS-Sección hueca rectangular: 80x40RHS	Estructura de Flotacion Primer Nivel	1	6.09 m
RHS-Sección hueca rectangular: 80x40RHS	Estructura de Flotacion Primer Nivel	1	1.00 m
RHS-Sección hueca rectangular: 80x40RHS	Estructura de Flotacion Primer Nivel	1	1.00 m
RHS-Sección hueca rectangular: 80x40RHS	Estructura de Flotacion Primer Nivel	1	1.00 m
RHS-Sección hueca rectangular: 80x40RHS	Estructura de Flotacion Primer Nivel	1	5.13 m
RHS-Sección hueca rectangular: 80x40RHS	Estructura de Flotacion Primer Nivel	1	1.00 m
RHS-Sección hueca rectangular: 80x40RHS	Estructura de Flotacion Primer Nivel	1	1.00 m
RHS-Sección hueca rectangular: 80x40RHS	Estructura de Flotacion Primer Nivel	1	1.00 m
RHS-Sección hueca rectangular: 80x40RHS	Estructura de Flotacion Primer Nivel	1	5.41 m
RHS-Sección hueca rectangular: 80x40RHS	Estructura de Flotacion Primer Nivel	1	1.00 m
RHS-Sección hueca rectangular: 80x40RHS	Estructura de Flotacion Primer Nivel	1	1.00 m



		
No. Descripción Date		
Owner HOTEL ALMOST TRADITIONAL Vistas Muelle		
Project Number 1-1-2014 Date 10/10/2014 Project Name HOTEL ALMOST TRADITIONAL		
M.1		
1 / 100		

## BIM ESTIMATING SAMPLES - EARTH WORK



Movimientos De tierras						
Comments	Name	Cut	Fill	Net cut/Fill	Projected Area	Surface Area
Acera	1921 Sidewalk	6.49 m³	0.00 m³	-6.49 m³	32.38 m²	32.38 m²
Acera	1921 Sidewalk	0.03 m³	0.85 m³	0.82 m³	26.72 m²	26.72 m²
Acera	1917 Concrete Pad	0.01 m³	0.03 m³	0.04 m³	0.47 m²	0.47 m²
Acera	1913 Concrete Pad	0.00 m³	3.21 m³	3.21 m³	2.50 m²	2.50 m²
Acera	1913 Concrete Pad 2	0.00 m³	4.15 m³	4.15 m³	2.39 m²	2.39 m²
Acera	1918.5 - 1917 Ramp	6.95 m³	0.00 m³	-6.94 m³	4.62 m²	4.89 m²
Acera	1910.5 Concrete Pad	0.21 m³	1.77 m³	1.56 m³	4.50 m²	4.50 m²
Acera	1910.5 Sidewalk	3.95 m³	8.17 m³	4.22 m³	27.39 m²	27.39 m²
Acera	1913 - 1910.5 Ramp	5.31 m³	9.27 m³	3.96 m³	25.28 m²	25.40 m²
Acera	1920 Concrete Pad	0.59 m³	0.00 m³	-0.59 m³	2.80 m²	2.80 m²
Acera	1918.5 Concrete Pad	0.09 m³	1.00 m³	0.91 m³	2.21 m²	2.21 m²
Acera	1916.5 Concrete Pad 2	0.00 m³	1.21 m³	1.21 m³	2.30 m²	2.30 m²
Acera	1918.5 Concrete Pad	2.83 m³	0.00 m³	-2.83 m³	6.86 m²	6.86 m²
Acera	1915 Concrete Pad	22.03 m³	2.28 m³	-19.74 m³	44.20 m²	44.20 m²
Acera	1914 Concrete Pad	0.91 m³	0.27 m³	-0.64 m³	3.72 m²	3.72 m²
Acera	1908.5 Concrete Pad	1.20 m³	1.60 m³	0.41 m³	7.35 m²	7.35 m²
Acera	1906.5 Concrete Pad	0.38 m³	0.43 m³	0.05 m³	2.26 m²	2.26 m²
Acera	1905 Concrete Pad	1.21 m³	0.06 m³	-1.15 m³	2.60 m²	2.60 m²
Acera	1902.5 Concrete Pad	0.31 m³	0.37 m³	0.05 m³	2.18 m²	2.18 m²
Acera	1900.5 Concrete Pad	0.29 m³	0.21 m³	-0.08 m³	2.37 m²	2.37 m²
Acera	1899.5 Concrete Pad	0.17 m³	0.22 m³	0.05 m³	1.75 m²	1.75 m²
Acera	1896 Concrete Pad	0.17 m³	0.05 m³	-0.12 m³	1.33 m²	1.33 m²
Acera	1893 Concrete Pad	0.86 m³	0.00 m³	-0.86 m³	2.01 m²	2.01 m²
Acera	1890 Concrete Pad	0.58 m³	0.00 m³	-0.58 m³	1.04 m²	1.04 m²
Acera	1887.5 Concrete Pad	1.10 m³	0.00 m³	-1.10 m³	1.98 m²	1.98 m²

Movimientos De tierras						
Comments	Name	Cut	Fill	Net cut/Fill	Projected Area	Surface Area
Acera	1885 Concrete Pad	0.33 m³	0.13 m³	-0.20 m³	1.97 m²	1.97 m²
Acera	1921 - 1918.5 Ramp	20.54 m³	0.28 m³	-20.26 m³	24.73 m²	24.92 m²
Acera	1918.5 - 1917.5 Ramp 2	2.09 m³	1.01 m³	-1.08 m³	13.09 m²	13.12 m²
Acera	1917.5 Concrete Pad	0.19 m³	0.79 m³	0.60 m³	4.34 m²	4.34 m²
Acera	1918.5 - 1917.5 Ramp	0.40 m³	8.51 m³	8.11 m³	18.26 m²	18.31 m²
Acera	1917.5 - 1916.5 Ramp	0.03 m³	7.03 m³	7.00 m³	19.73 m²	19.76 m²
Acera	1916.5 - 1914 Ramp	0.50 m³	6.79 m³	6.29 m³	21.02 m²	21.22 m²
Acera	1914 Sidewalk	13.64 m³	0.26 m³	-13.37 m³	25.96 m²	25.96 m²
Acera	1914 - 1910.5 Ramp	0.06 m³	20.48 m³	20.42 m³	30.69 m²	30.98 m²
Acera	1910.5 - 1908.5 Ramp	0.98 m³	12.14 m³	11.16 m³	17.56 m²	17.73 m²
Acera	1910.5 Sidewalk 2	0.00 m³	10.42 m³	10.42 m³	8.64 m²	8.64 m²
Acera	1909.5 Sidewalk	0.00 m³	6.53 m³	6.53 m³	8.68 m²	8.68 m²
Acera	1910.5 - 1909.5 Ramp	0.00 m³	24.13 m³	24.13 m³	18.59 m²	18.63 m²
Acera	1909.5 - 1908.5 Ramp	2.55 m³	10.47 m³	7.92 m³	25.34 m²	25.38 m²
Acera	1906.5 - 1905 Ramp	0.73 m³	5.92 m³	5.20 m³	14.55 m²	14.67 m²
Acera	1905 - 1902.5 Ramp	0.14 m³	26.22 m³	26.08 m³	21.83 m²	22.04 m²
Acera	1899.5 - Ramp 2	0.60 m³	1.17 m³	0.58 m³	8.57 m²	8.66 m²
Acera	1899.5 Sidewalk 2	0.07 m³	8.67 m³	8.60 m³	17.45 m²	17.45 m²
Acera	1899.5 Sidewalk	3.60 m³	27.50 m³	23.90 m³	56.53 m²	56.53 m²
Acera	1900.5 - 1899.5 Ramp	0.08 m³	15.59 m³	15.52 m³	22.02 m²	22.06 m²
Acera	1890 - 1887.5 Ramp	26.92 m³	0.00 m³	-26.92 m³	28.24 m²	28.40 m²
Acera	ASSURED Concrete Pad	0.59 m³	0.00 m³	-0.59 m³	2.95 m²	2.95 m²
Acera	2021 Sidewalk	1.40 m³	0.75 m³	-0.65 m³	9.27 m²	9.27 m²
Cuarto de Basuras	Dump Bldg	4.63 m³	0.00 m³	-4.63 m³	18.41 m²	18.41 m²
Cuarto de Lavado	Laundry Bldg	4.77 m³	14.10 m³	9.32 m³	30.62 m²	30.62 m²

Movimientos De tierras						
Comments	Name	Cut	Fill	Net cut/Fill	Projected Area	Surface Area
Escalera	1921-1917 Stairs	0.09 m³	2.02 m³	1.93 m³	5.59 m²	6.64 m²
Escalera	1917-1913 Stairs	0.59 m³	1.54 m³	0.95 m³	6.51 m²	7.20 m²
Escalera	1908.5 - 1906.5 Stairs	0.61 m³	2.40 m³	1.79 m³	9.45 m²	9.76 m²
Escalera	1902.5 - 1900.5 Stairs	0.26 m³	5.19 m³	4.93 m³	11.35 m²	11.60 m²
Escalera	1899.5 - 1896 Stairs	0.08 m³	6.08 m³	5.99 m³	10.22 m²	11.09 m²
Escalera	1896 - 1893 Stairs	2.92 m³	0.66 m³	-2.27 m³	9.36 m²	10.05 m²
Escalera	1893 - 1890 Stairs	1.22 m³	7.33 m³	6.11 m³	17.20 m²	17.61 m²
Escalera	1887.5 - 1885 Stairs	2.84 m³	0.29 m³	-2.55 m³	13.17 m²	13.50 m²
Escalera	1885 - 1880 Stairs	0.06 m³	2.19 m³	2.13 m³	7.43 m²	8.82 m²
Escalera	Common zones M 0	7.75 m³	0.00 m³	-7.75 m³	6.31 m²	6.99 m²
Escalera	Common Zones	4.98 m³	26.27 m³	21.30 m³	50.37 m²	50.37 m²
Escalera	Stair 1 Pool zone	3.53 m³	2.44 m³	-1.09 m³	16.17 m²	16.17 m²
Escalera	Stair 2 Pool zone	4.93 m³	1.27 m³	-3.67 m³	14.93 m²	14.93 m²
Escalera	Stair 3 Pool zone	7.58 m³	0.54 m³	-7.03 m³	16.26 m²	16.26 m²
Escalera	Stair 4 Pool zone	6.45 m³	0.02 m³	-6.42 m³	10.70 m²	10.70 m²
Escalera	Stair 5 Pool zone	0.00 m³	133.23 m³	133.23 m³	102.83 m²	102.83 m²
Parqueadero	Parking Section 1	10.55 m³	144.93 m³	134.38 m³	305.16 m²	305.16 m²
Parqueadero	Parking Section 2	0.00 m³	519.42 m³	519.42 m³	380.62 m²	380.62 m²
Parqueadero	Parking Section 3	0.00 m³	40.28 m³	-40.28 m³	14.40 m²	14.40 m²
Parqueadero	Parking Section 4	0.00 m³	33.38 m³	33.38 m³	53.47 m²	53.47 m²
Parqueadero	Pool M-1	32.09 m³	0.00 m³	-32.09 m³	33.15 m²	33.15 m²
Parqueadero	Pool M-2	56.83 m³	0.15 m³	-56.68 m³	144.60 m²	144.60 m²
Parqueadero	Common Zones M 0	14.62 m³	0.11 m³	-14.50 m³	38.64 m²	38.64 m²
Parqueadero	Common Zones M 1	234.10 m³	0.30 m³	-233.80 m³	193.00 m²	193.00 m²

## BIM ESTIMATING SAMPLES - REBAR

DESPIECE ACERO ZONAS  
COMUNES - COLUMNAS



Lista de barras 7/8"

	DIAGRAMA	CANTIDAD	DIAM.	LONG. (m)	PESO	UBICACION
1		26	7/8"	6.95	549.89	
2		6	7/8"	5.40	98.56	
3		6	7/8"	3.65	66.52	

Peso total barras 7/8" = 714.87 kg

Lista de barras 3/4"

4		60	3/4"	5.15	460.61	
---	--	----	------	------	--------	--

Peso total barras 3/4" = 460.41 kg

Lista de barras 5/8"

5		3	5/8"	5.65	30.96	
6		7	5/8"	5.30	57.58	
7		16	5/8"	5.25	130.37	
8		68	5/8"	5.10	538.23	
9		23	5/8"	3.65	130.29	
10		26	5/8"	2.60	104.92	

Peso total barras 5/8" = 992.35 kg

Lista de barras 1/2"

11		48	1/2"	5.60	314.90	
12		8	1/2"	5.25	41.75	
13		20	1/2"	5.20	103.38	
14		74	1/2"	5.05	371.66	
15		8	1/2"	3.65	29.32	
16		3	1/2"	2.25	6.71	
17		28	1/2"	2.20	61.23	

Peso total barras 1/2" = 928.45 kg

DESPIECE ACERO ZONAS  
COMUNES - COLUMNAS



Lista de barras 3/8"

	DIAGRAMA	CANTIDAD	DIAM.	LONG. (m)	PESO	UBICACION
18		62	3/8"	1.20	41.66	
19		673	3/8"	1.00	375.66	
20		62	3/8"	0.46	15.97	
21		1470	3/8"	0.36	296.35	

Peso total barras 3/8" = 730.87 kg

Lista de barras 1/2"

22		819	1/2"	0.89	725.99	
----	--	-----	------	------	--------	--

Peso total barras 1/2" = 725.99 kg

**PESO TOTAL = 4552.94 kg**



[WWW.BIMCS.CO/](http://WWW.BIMCS.CO/)

## ESTIMATING SAMPLES - UTILITIES

5" Stainless Steel Direct Buried		
Type	WIDTH (ft)	Height (ft)
5" Stainless Steel Direct Buried	0.00	0.00

Trench Info		
Width Trench (ft)	Stainless Steel Conduits Diameter (in)	# Conduits (ea)
4.0	4	1
6" Gravel base (ft)	0.50	

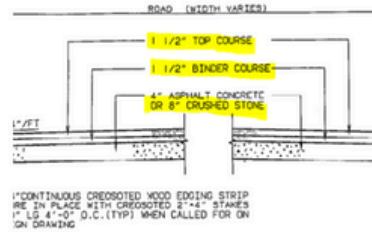
### ON DIRT

INITIAL STATION	FINAL STATION	LENGTH DUCT BANK (LF)	B/F depth (ft) - on top of pipe DB	DEPTH OF EXCAVATION (VF)	Spoils (CY)	EXC. VOL (CY)	#57 bedding Stone Vol (CY)	VOL OF BACKFILL (CY)	Length of 8" Stainless Steel Conduit (LF)	Saw Cutting (LF)
Edge "A"	Pothead A	51.00	9.00	9.50	3.78	71.78	3.78	68.00	51.00	102.00
Edge "A"	Pothead B	63.00	10.00	10.50	4.67	98.00	4.67	93.33	63.00	126.00
Edge "A"	Pothead C	73.00	10.00	10.50	5.41	113.56	5.41	108.15	73.00	146.00
		187			14	283	14	269	187	374

23  
TON

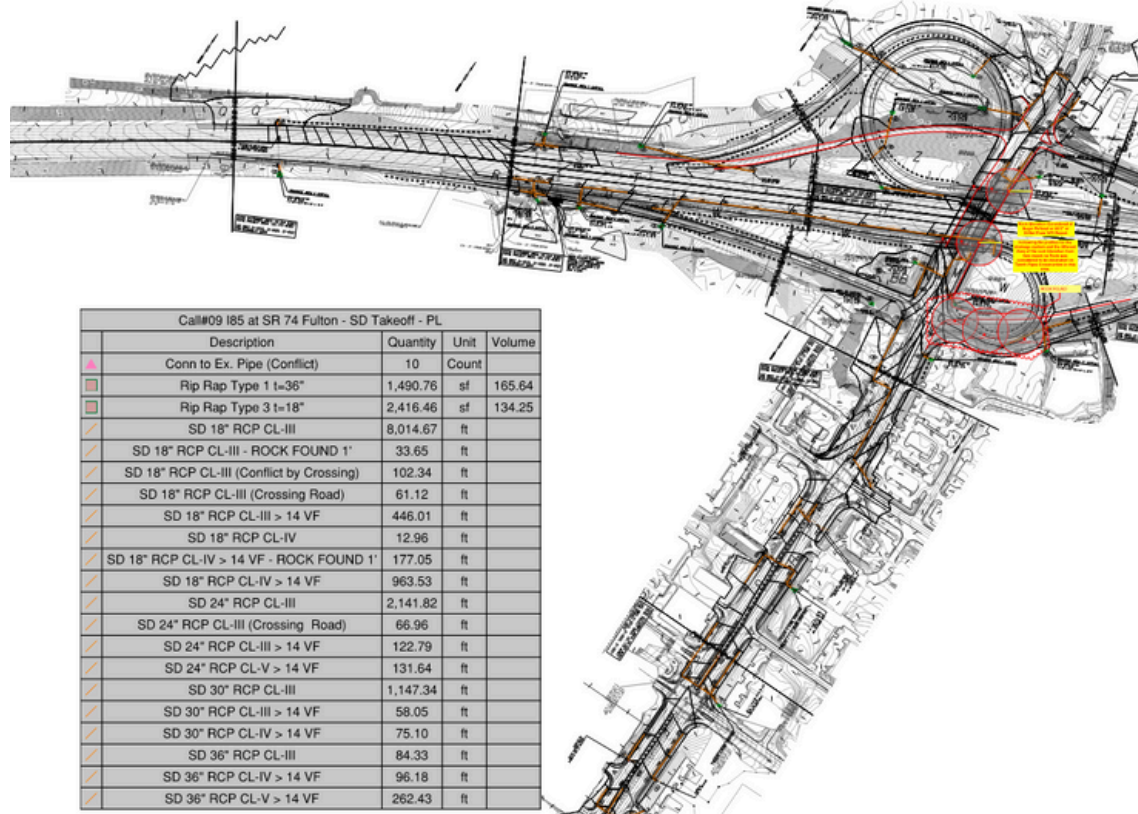
ELEMENTS				
Accessories	Individual Quantity (ea)	# conduits	TOTAL quantities (EA)	Detail / Profile / Planview
5" Feeder Stainless Steel 90° Long Sweep Bend	3	1	3	UK
5" Feeder Stainless Steel 22.5° Long Sweep Bend	3	1	3	UK
5" Feeder Stainless Steel 11.25° Long Sweep Bend	1	1	1	UK

New Road		
Description	CY	TON
Stone #57	14	23
Trench BF	244.0	488
8" Crushed Stone	19.0	38
3" Asphalt	7.0	15
Spoils	284	



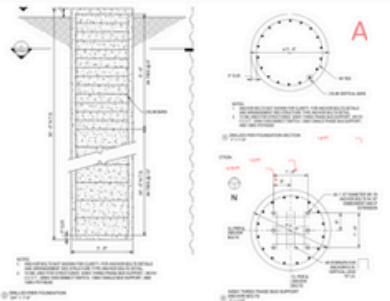
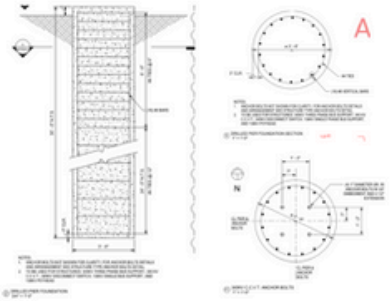


## ESTIMATING SAMPLES - UTILITIES





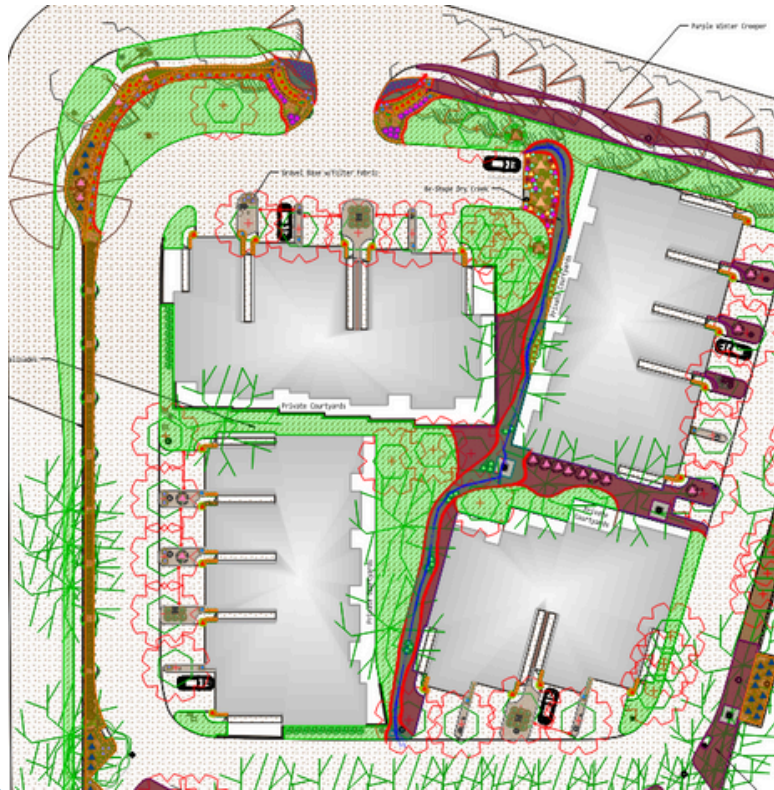
## ESTIMATING SAMPLES - CONCRETE

PILES CONCRETE							
PILES SCHEDULE							
ITEM	DESCRIPTION	QTY (EA)	DIAMETER (FT)	AREA (SFT)	LENGTH (FT)	VOLUME (CYD)	DETAIL
1	345Kv Bus Support (P1 To P3)	3	3.5	9.63	30	32	
2	345Kv C.C.V.T. (P4 To P6)	3	3.5	9.63	30	32	

## ESTIMATING SAMPLES - REBAR

PILES REBAR										
Vertical Bars										
ELEMENT	QTY	# BARS	SIZE	LENGTH (FT)	HOOK (FT)	SPLICE LENGTH (FT)	TOTAL LENGTH (FT)	WEIGHT (LB/FT)	TOTAL WEIGHT (LB)	TOTAL WEIGHT (TON)
345Kv Bus Support (P1 To P3)	3	18	#8	29.83	1.33	9.16	2177.28	2.67	5813.34	2.91
345Kv C.C.V.T. (P4 To P6)	3	18	#8	29.83	1.33	9.16	2177.28	2.67	5813.34	2.91
345Kv Disconnect Switch (P7 To P10)	4	18	#8	29.83	1.33	9.16	2903.04	2.67	7751.12	3.88
Tower Foundations (P11 To P14)	4	40	#11	39.83	1.33	13.76	8787.20	2.67	23461.82	11.73
138Kv Bus Support (P15 To P17)	3	18	#8	29.83	1.33	9.16	2177.28	2.67	5813.34	2.91
Lightning Mast (P18 To P19)	2	16	#8	38.83	2.66	9.16	1620.80	2.67	4327.54	2.16
138Kv Pothead (P20 To P21)	2	18	#8	29.83	1.33	9.16	1451.52	2.67	3875.56	1.94
138Kv Transformer And Par Moat Mat (P22 To P131)	110	6	#6	32.58	1	9.16	28208.40	2.67	75316.43	37.66
Breaker And Disconnect Switch Pad (P132 To P155)	24	6	#6	32.58	1	9.16	6154.56	2.67	16432.68	8.22
Deluge House Enclosure (P156 To P159)	4	6	#6	32.58	1	9.16	1025.76	2.67	2738.78	1.37
TOTAL (TON)										75.67

## ESTIMATING SAMPLES - LANDSCAPE



Legend			
Description	Quantity	Unit	
Zoysia Palisades	14,402.89	sf	

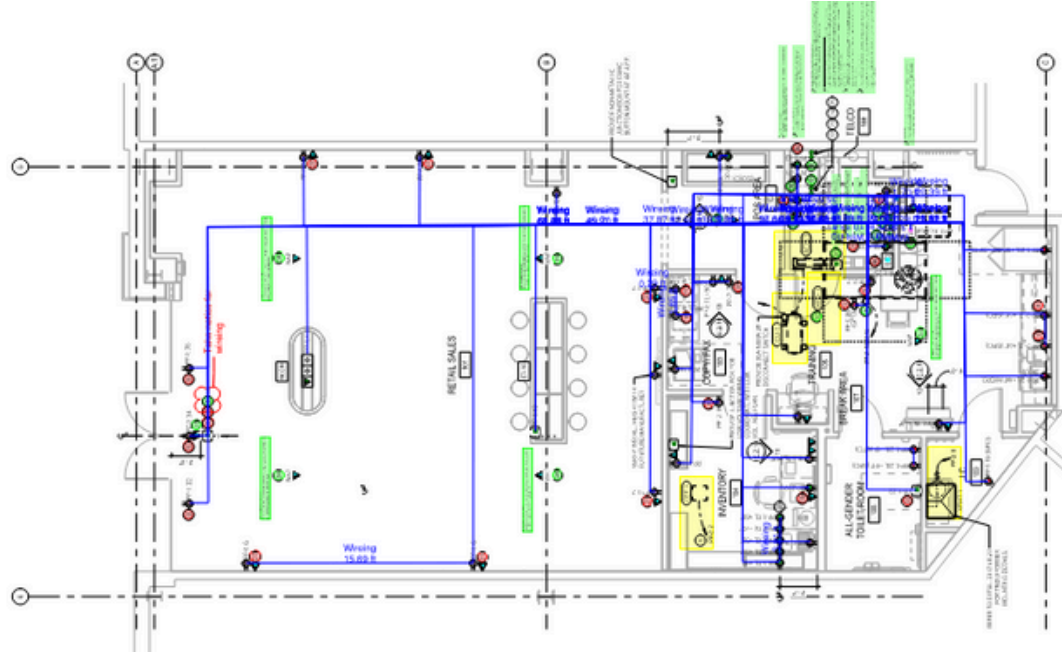
  

BED AMENDMENT				
Description	Quantity	Unit	Depth	Volume
3" HARDWOOD MUCLH	4,076.23	sf	3	37.74
3/16" Steel Border	954.12	ft	0	
6" BED MIX	11,652.53	sf	6	1,690.86
Dry Creek	1,991.16	sf	6	36.87
Granite Gravel	1,457.78	sf	3	13.50
Mich Ring	3	Count	0	

PLANTING		
Description	Quantity	Unit
Arizona Cypress - Cupressus arizonica - 30 Gal	5	Count
Blonde Ambition Grass - Bouteloua gracilis - 1 Gal	8	Count
Compact Texas Sage - Leucophyllum frutescens - 3 Gal	4	Count
Dwarf Oakleaf - Hydrangea quercifolia - 5 Gal	16	Count
Dwarf Yellow Yucca - Hesperaloe parviflora - 3 Gal	26	Count
Feather Falls Sedge - Carex oshimensis - 1 Gal	316	Count
Inland Sea Oats - Chasmanthium latifolium - 1 Gal	24	Count
Lemon Lime Nandina - Nandina domestica - 3 Gal	56	Count
Mystic Spires Salvia - Salvia Balsamispim 1 Gal	28	Count
Purple Pillar Attea - Hibiscus syriacus - 3 Gal	18	Count
Purple Skullcap - Scutellaria spp - 1 Gal	51	Count
Red Turk's Cap - Malvarviscus - 1 Gal	23	Count
Skyline Holly - Ilex vomitoria - 5 Gal	16	Count
The Blues Bluestem - Schizachyrium scoparium - 1 Gal	19	Count
Zexmenia - Wedelia hispida - 1 Gal	6	Count

## ESTIMATING SAMPLES - ELECTRICAL



Quantities Schedule			
	Description	Quantity	Unit
▲	DATA OUTLET - DATA FEED	23	Count
▲	DUPLEX RECEPTACLE	27	Count
▲	FLOOR-BOX DOUBLE WHIP WITH DATA PORTS	1	Count
●	FLOOR-BOX SINGLE WHIP	7	Count
▲	GFCI DUPLEX RECEPTACLE	8	Count
■	JUNCTION BOX	8	Count
■	LIGHTING CONTACTOR	1	Count
■	PANEL	2	Count
▲	QUAD RECEPTACLE	11	Count
■	SMART METER	1	Count
—	Wiring	1.137,42	ft

## ESTIMATING SAMPLES - ELECTRICAL

### C01|Electrical System Installation: Electrical Fixtures, Wiring, Conduits and Related

Part Code	Supplier Code	Category	Qty	Type	Description	Material	Lab. Hours	Labor	Sub. Cont	Total
		1 PROJECT PREPARATION	3000.	Dollars	Misc. General Items	\$3 000.00	0.	\$0.00	\$0.00	\$3 000.00
		25 ELECTRICAL	8.	Pieces	Junction Box	\$400.00	100.	\$4 000.00	\$0.00	\$4 400.00
		25 ELECTRICAL	7.	Pieces	Floor-Box Single Whip	\$318.92	112.5	\$4 500.00	\$0.00	\$4 818.92
		25 ELECTRICAL	1138.	Lin. Feet	WIRE#12n THHN WHITE	\$1 500.00	50.	\$2 000.00	\$0.00	\$3 500.00
		25 ELECTRICAL	1139.	Lin. Feet	Wire #12 THHN Green (GND)	\$1 500.00	50.	\$2 000.00	\$0.00	\$3 500.00
		25 ELECTRICAL	1137.	Lin. Feet	WIRE#12 THHN BLACK	\$1 500.00	50.	\$2 000.00	\$0.00	\$3 500.00
		25 ELECTRICAL	1140.	Lin. Feet	3/4" EMT Pipe	\$2 500.00	150.	\$6 000.00	\$0.00	\$8 500.00
		25 ELECTRICAL	27.	Pieces	Electrical Outlet -	\$2 500.00	0.	\$6 000.00	\$0.00	\$8 500.00
		25 ELECTRICAL	8.	Pieces	Electrical Outlet - GFI	\$1 200.00	0.	\$2 500.00	\$0.00	\$3 700.00
		25 ELECTRICAL	11.	Pieces	Electrical Outlet -	\$1 800.00	0.	\$3 000.00	\$0.00	\$4 800.00
		25 ELECTRICAL	1.	Lin. Feet	WIRE #6 THHN GREEN (GND)	\$100.00	2.5	\$100.00	\$0.00	\$200.00
		25 ELECTRICAL	15.	Lin. Feet	4" EMT Conduit	\$500.00	2.5	\$100.00	\$0.00	\$600.00
		25 ELECTRICAL	1.	Lin. Feet	2-1/2" EMT Conduit	\$10.70	8.	\$320.00	\$0.00	\$330.70
		25 ELECTRICAL	1.	Pieces	Floor-Box Double Whip	\$100.00	10.	\$400.00	\$0.00	\$500.00
		25 ELECTRICAL	11.	Lin. Feet	1-1/4" EMT Conduit	\$500.00	25.	\$1 000.00	\$0.00	\$1 500.00
		25 ELECTRICAL	23.	Pieces	Data Outlet - Data Feed	\$1 500.00	70.	\$2 800.00	\$0.00	\$4 300.00
		25 ELECTRICAL	32.	Lin. Feet	3-1/2" Conduit	\$100.00	10.	\$400.00	\$0.00	\$500.00



[WWW.BIMCS.CO/](http://WWW.BIMCS.CO/)